

Pangea Family Release Schedule

Radio Free Europe / Radio Liberty Inc.:	Tue, 26-Jul, 2016 07:00 am CEST	01:00 am EDT
Voice of America:	Wed, 27-Jul, 2016 09:00 am CEST	03:00 am EDT
Middle East Broadcasting Networks, Inc.:	Wed, 27-Jul, 2016 10:30 am CEST	04:30 am EDT
Office of Cuba Broadcasting:	Wed, 27-Jul, 2016 11:30 am CEST	05:30 am EDT
LibertyNET:	Wed, 27-Jul, 2016 01:30 pm CEST	07:30 am EDT
BBG Direct	Wed, 27-Jul, 2016 02:00 pm CEST	08:00 am EDT

Latest Pangea Release Schedule available at: <http://support.pangea-cms.com>

Table of Contents

PANGEA FAMILY RELEASE SCHEDULE	1
TABLE OF CONTENTS	1
NEW FEATURES – RESPONSIVE WEB SITES & CMS.....	2
BBG DIRECT IMPROVEMENTS	11
MULTIMEDIA ASSET MANAGEMENT	12
NEW KEYS	14

New Features – Responsive Web Sites & CMS

• **Facebook live streaming using external Pangea TV tubes**



We want to bring as much engagement on social media as possible for our services and one of the best ways to achieve this goal is through live streaming. Eligible services using external Pangea TV tubes are now able to stream their TV content directly to Facebook. When enabled, eligible services will find the "Facebook Broadcast" option on external tube Show Edit page. This feature will be initially deployed on the selected pilot sites and will be thoroughly monitored. After then it is going to be deployed to rest of the sites and entities.

Show Edit

Wednesday 20 July 2016 Washington DC 08:36 | Local time: 08:36

Save Cancel

Show Properties

Show Type: Single Live Input

Title *
RNC protest in Cleveland, Ohio

Description *
RNC protest in Cleveland, Ohio

Broadcast Time (local time)

From : To :

Date *
20.7.2016

Hide From Site Record

Record as:
Draft

Facebook Broadcast

Facebook Account
lukas test facebook

Image
No image has been attached
Click the add button to attach an image

Add

Zones *

Clear Zones (1)

Visiting the USA

Arirang

VOA NewsCenter

Breaking News

US

Archive

Test podcasts

Selenium - DONT TOUCH

Selenium AllContent

Selenium MultiMedia

Selenium Forum

Selenium Audio

Selenium Video

Selenium SoundSlide

Tube Name	Akamai Channel Name	Akamai Playback URL	Is Primary Channel
ext tube test facebook	legacy chan	rtmp://cp107825.live.edgefcs.net/live/rfe_tvmc3@383649	Yes
ext tube test facebook	universal channel	http://rfe-lh.akamaihd.net/z/rfe_tvmc3@383625/manifest.f4m	No

• **HTML5 player UX improvements**

To increase the multimedia consumption user experience for our audience, we have focused on improving the player interaction for our mobile audience, making our media players friendlier for touch devices.

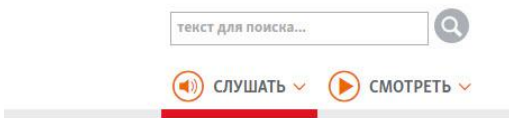
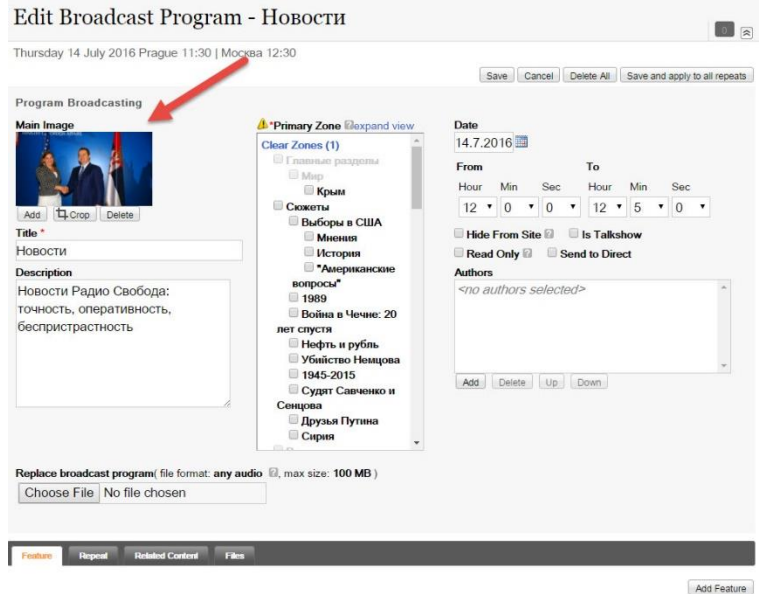


Broadcast Image Support

As of this release Pangea will support adding specific images to radio broadcast programs recorded by Pangea, this feature can be set on Audio Schedule and the template week.

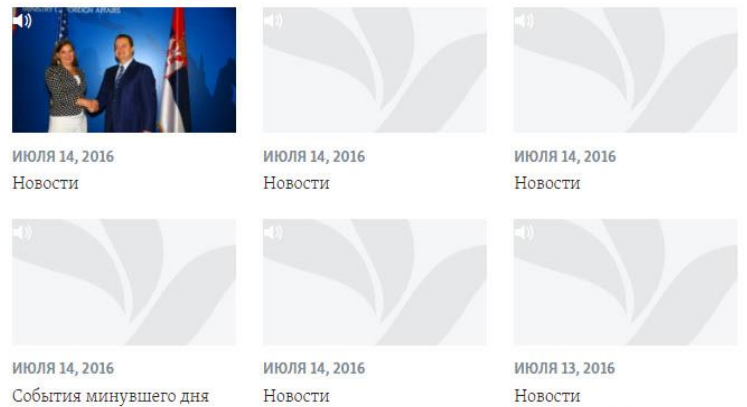
It is designed to avoid the same image on program pages, now editor have the option to select specific image per audio, displayed as episode on the pages.

Images added will display on widgets, archive pages and the player.



Новости

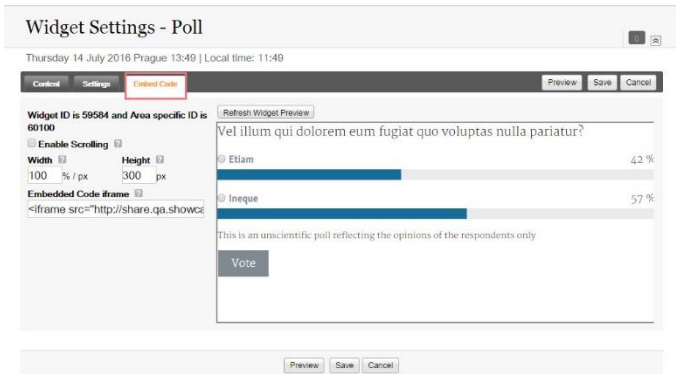
Эпизоды



[Смотреть все части](#)

Poll widget Sharing

The option to share poll has been on our backlog for some time. Pangea now allows to editors when creating a **Poll widget in section** have the option to copy & paste the embed code to share with third party sites. Alternatively, the visitor can copy & paste the code as snippet in article body to get the poll embed. We will keep working on an improved solution for embedding polls on article in future releases.

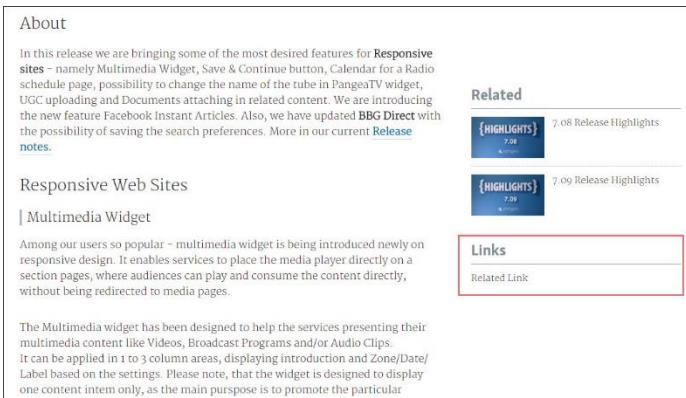
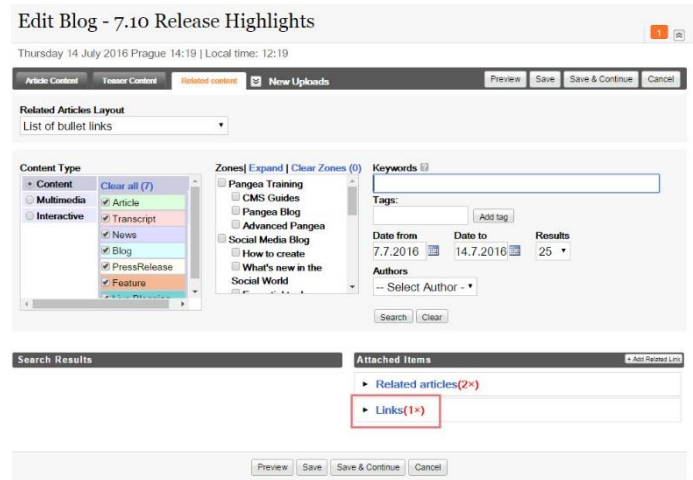


• **Related Links on Article Page**

Yet another feature migrated from the Desktop sites -- when creating an article, editors have option not just to related articles of videos or Pangea content, but also to relate and link to external sources and URLs.

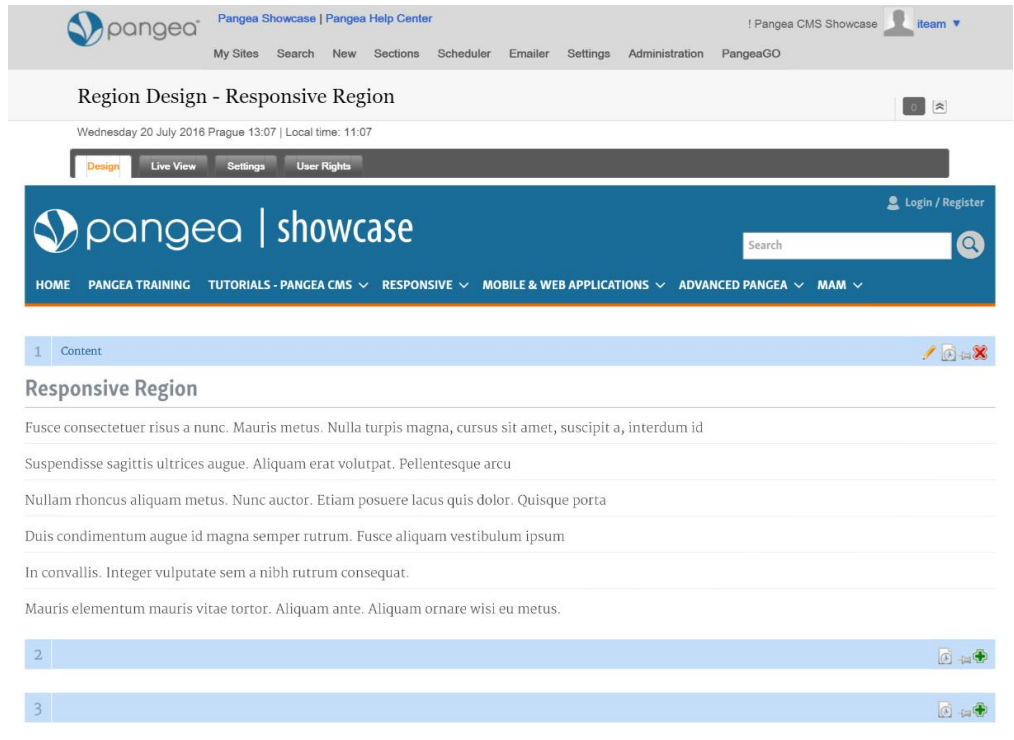
You can find this option under related content.

Related links will display on front end under related content.



• **Responsive Regions**

After receiving your valuable feedback, Regions for responsive sites have been upgrade, now user have option to use 3 areas in region instead of 2.



- Jobs page and Job item page (applies for RFE/RL English Site)

Jobs functionality is one of the last feature we were missing on the Responsive Sites – since Pangea 7.11 the job landing page and job detail pages for RFERL English is now available.

The screenshot shows a job listing for 'Journalist, Turkmen Service'. The page includes a search bar, navigation tabs for various regions, and a main heading. The job description states: 'We are currently seeking a Journalist for our Turkmen Language Service, to initiate, prepare, develop, produce, and deliver wide variety of journalistic material on multiple platforms (radio, online, social media) as assigned, relevant to the target audience and to RFE/RL mission, while adhering and striving to exceed RFE/RL content quality standards. RFE/RL jobs are versatile and cover wide range of tasks and activities. An appropriate candidate may need to acquire knowledge of and focus on different areas of assignments or projects while in the same job and while being flexible in terms of time. This position will be based in Prague, Czech Republic.'

Qualifications:

- Professional fluency in English and Turkmen;
- Demonstrated writing and analytical skills with broad knowledge of political, economic, and social structures of Turkmenistan and surrounding regions, as well as strong general knowledge of international affairs;
- Ability to write and edit stories for the Website;
- Minimum of 4 years journalism experience, preferably in broadcast medium;
- Demonstrated strong commitment to journalistic integrity and objectivity;
- A university degree in journalism, international relations, or a related field, or equivalent practical experience in one of these disciplines;
- Proven ability to function effectively with people from widely different national and cultural backgrounds;
- Knowledge and practical experience of radio broadcasting practices and techniques is highly desired;
- Willingness and ability to learn and to work with audio and video equipment, word processing tools, information research tools and new technologies and media platforms;
- Ability to read and understand other languages spoken in RFE/RL's broadcast regions would be a plus.

Responsibilities:

Apply now

Should you be interested in this position please apply by sending your CV and a cover letter in English to jobs@rfe1.org, including in the subject line the vacancy number as above.

Appointment against this post is on a local basis only. [Detail](#)

By applying to this advertisement or sending your CV and/or other personal data to RadioFreeEuropeRadioLiberty, you are agreeing to having your data stored and managed by employees of the HR department of the company for possible future reference in full accordance with the law (no. 101/2000 Sb. regarding personal data protection). This agreement may only be withdrawn by a written notification and remains valid until that date. However no longer than 3 years.
 Thank you

Opisani su teme isprati iz sadržaja Vašeg Internet-a pregledajući dodatni osobni materijal do specifičnosti RadioFreeEuropeRadioLiberty dajući rezultat koji se sprema u naš bazu podataka i dalje će biti dostupni. Ovo važi za sve informacije koje ste nam dali. Teme sadržaja koji su za vas određeni prethodno formom, ne mogu biti otkriveni javno.

The screenshot shows a list of job categories on the RFE/RL Jobs page. The categories are:

- Prague - internationally recruited
 - Journalist, Tatar-Bashkir Service
 - Journalist, Ukrainian Service
 - Journalists, North Caucasus Service
 - Journalist, Turkmen Service
- Prague - locally recruited
 - Motion Graphics Designer
 - milan text
 - Internet Team User Support
 - Business Analyst
 - Broadcast Service Administrator
 - Visa and Immigration Specialist
 - Associate Producer, TV
 - Broadcast TV Engineer
 - Manager, Library Services
 - Compensation & Benefits Specialist
 - Web Developer - Net
- Washington D.C. - locally recruited
 - Chief Financial Officer
 - Media Relations Manager
- Freelance Opportunities
 - Freelance Correspondent based in Central Asia
- Internships
 - Info about the internship program
 - Prague: To apply for internship in Prague use email PRInternships@rfe1.org
 - Washington D.C.: To apply for internship in Washington DC, please use email DCInternships@rfe1.org

Who we are ...

Radio Free Europe/Radio Liberty (RFE/RL) is an international broadcast organization based in Washington, D.C. and Prague, Czech Republic. RFE/RL's programs -- via radio, the Internet, and television -- reach influential people in 23 countries, including Afghanistan, Iran, Bosnia, the Caucasus, and Central Asian nations. RFE/RL's mission is to provide accurate and reliable news and information to domestic audiences in the local language. RFE/RL broadcasts in 26 languages and attracts more than 26 million weekly listeners and online visitors. With more than 450 journalists, 750 translators, and 13 local bureaus, RFE/RL is one of the most comprehensive news operations in the world. It is funded by the U.S. Congress through the Broadcasting Board of Governors (BBG).

RFE/RL Standards

RFE/RL is proud to be an equal opportunity employer. All qualified applicants will receive consideration for employment without regard to race, color, religion, gender, gender identity or expression, sexual orientation, national origin, genetics, disability, age, or veteran status. Positions at RFE/RL are considered Public Trust Positions, with appointment contingent upon the positive outcome of a background investigation.

Please note localization keys.

- **Print button on a responsive content page**



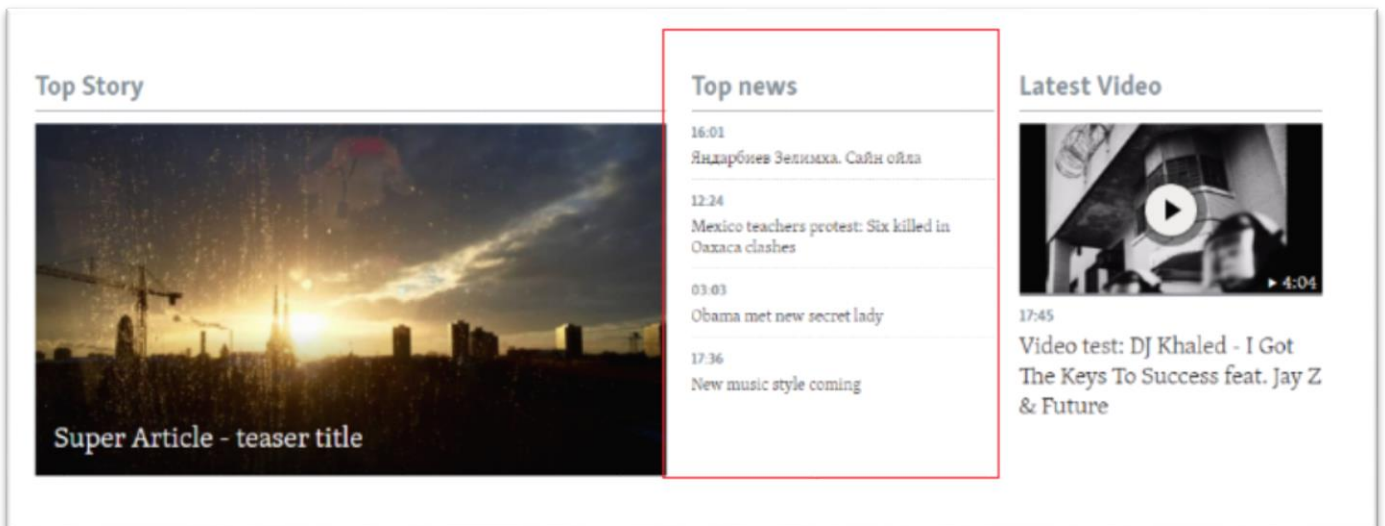
Based on many requests from editors and users, we have developed a print button for printing a content (alternative to Ctrl+P shortcut). Web visitors can print any content (article, news, blogs, transcript) with only text and without images, embed or related content or comments. While adding a new icon to a print button, we added also an icon to comments. There are 2 new localization keys for a print button, please make sure you provide proper translation.

`Responsive.Sharing.Print.Text,`
`Responsive.Sharing.Print.Hover.Text.`



- **Date/time format configurable on widget**

For a content widget, you can pick up the news layout with setting up the exact time. We used to use a date format for the whole site (widgets/ articles/ zone archive pages). We developed new configuration key to be able to set up different date/ time format for widgets (content/ multimedia) with default value HH:mm when using exact or relative time and pages with item lists with default value MMMM dd, yyyy (zone archive pages, author's page, search page). Please, let us know when you would like to change any date format on the site.

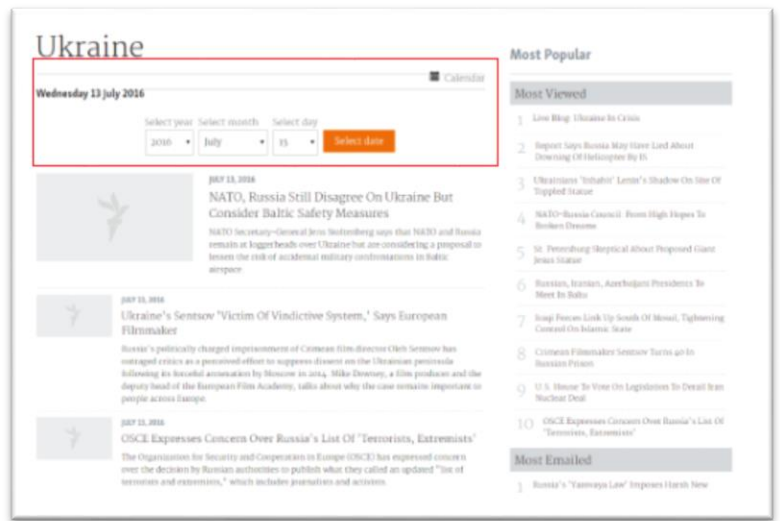
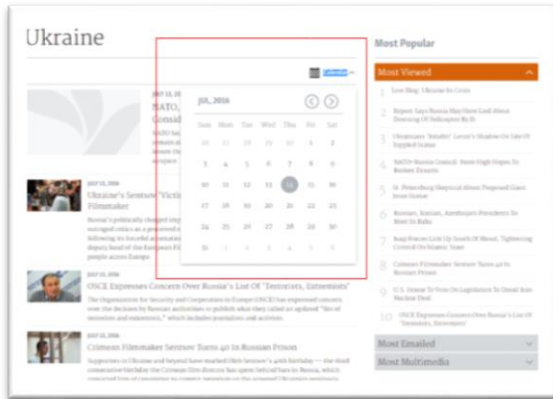


- **Calendar on a content zone archive page**

The last release, we developed a calendar on a radio schedule page. This release we have been working to fix localization for some specific languages and implemented the calendar on a content zone archive page. You can see the calendar on each content zone archive, so if you have not started to use radio scheduler, please, check all localization keys for "Calendar" and translate the keys.

Calendar on devices supported java script

Calendar on devices not supported java script

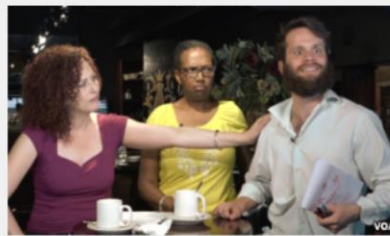


- **Embedded quiz**

We have improved embedded quiz and when users click on a start button on an article, users stay on the article and can continue doing the quiz without going out of the page.

Can you find another time in the video when Anna or Pete identifies a problem? Write to us in the Comments section or [send us an email](#). Teachers, see the [Lesson Plan](#) for more details on teaching this strategy.

Listening Quiz



Lesson 20 - Quiz

[Start Quiz](#)

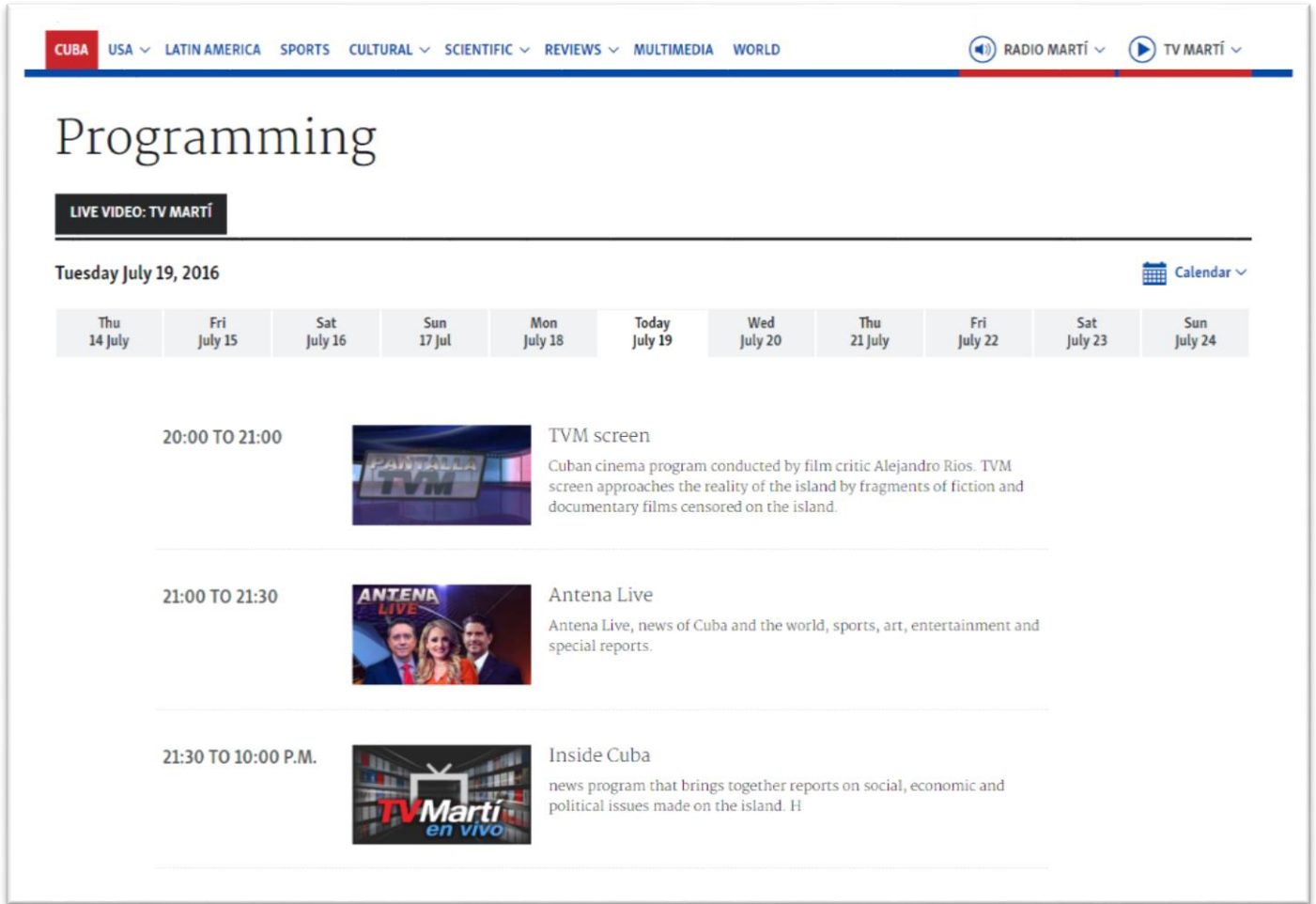
- **Update 4-column section layout - add widgets**

Based on many requests from our editors, we added four a column widgets and a four-column widget to our current 4-column widget section layout. Now, editors can use 25 widgets area for a section page. The benefit of a 4-column section layout is that the page looks better on tablets and more widgets to use.



- **TV Scheduler**

As we developed a radio schedule page, we built a TV schedule page for responsive. All meta-data (image, title and introduction of the show) are taken from Video Scheduler in Pangea CMS. If a show has setup recording and is assigned to a visible zone, there is a link to a record on a TV schedule page. There are displayed also shows, which are not recorded, or are in the future, but without a link. We used the same calendar as for radio schedule and it works for all devices (with and without java script). If you want to start using TV scheduler, please create a manual link to /schedule/tv.htm or /schedule/tv.htm#live-now or pick up TV Scheduler from special pages in any link settings in Pangea CMS.



- **Links to author bio page from a content**

If users want to create a link to an author from a content page, he/ she should check Generate Content box in Pangea CMS.

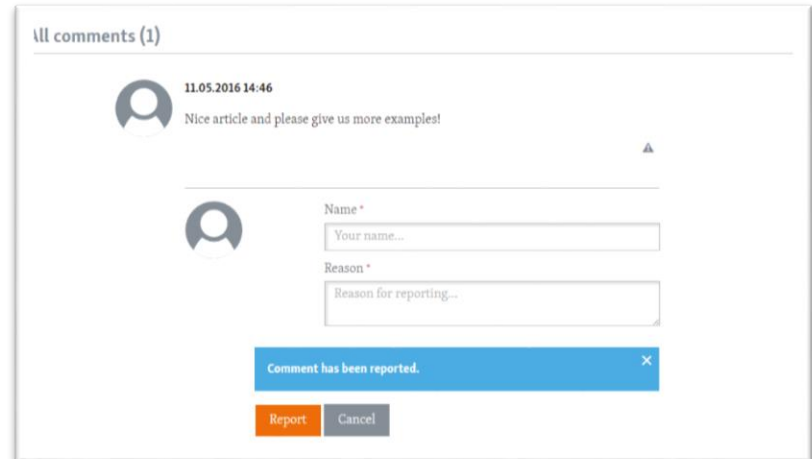


- **Comment fixes**

We've done a few updates on the commenting functionality so comments should now be fully working on devices without Javascript and the access log has been implemented to comments.

- **Report a comment**

When user sends report now, system message will show up on a content page and the proper comment moderator gets notified about a new report by Pangea notification email. In case you wish to enable reporting feature, let us know via the Pangea Help Center portal and please don't forget to make sure the localization key `Forum.ReportComment.SuccessMessage` is localized.



- **Instagram Logo button update**

Instagram has changed its logo, so we updated it also on the Responsive Sites.



- **Quotation improvements**

We have had an existing Quotation implementation, but we have missed out the styling as current CKEditor offers to create "Quotes" and "Quotes without quotes". We have fixed it and also how quotes display on HTML widgets.

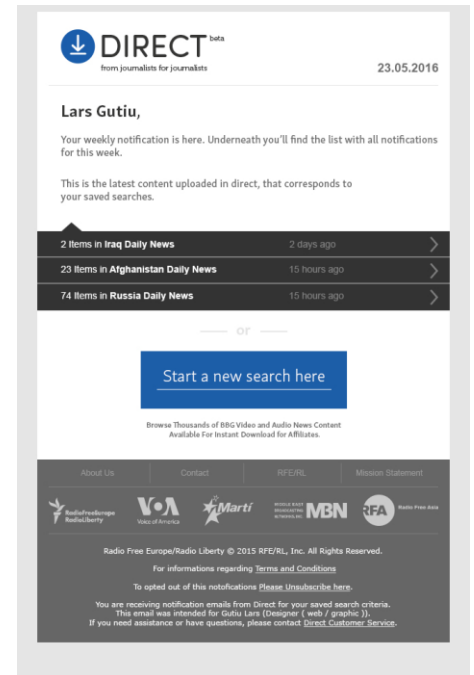
BBG Direct Improvements

- **Newsletter about new content**

In the previous code release we've announced a new feature called "Saved search" which makes search process faster and easier. Now we add following feature for email notification. You can set how often you would like to be informed about fresh content daily, weekly, and monthly and you will get list of your saved searches with information how many items can be found. After that, you can just click on list item and you will get BBGDirect saved search result.

- **More Article types**

After the code release you will be able to send to Direct new content types from CMS like Transcript, News, Blog, PressRelease, Feature. If you want to send these new types into the BBGDirect you just need to have proper zone which is connected with Direct and save it in there.



Multimedia Asset Management

- **Automatic Project Creation (APC)**

MAM offers newly an option to create projects automatically,

This function allows to producers option to set the system to create folders on a FTP or server automatically every night. Any files uploaded in this folder are going to be automatically ingested to Pangea MAM.



MAM will:

- Create once on daily basis (after midnight)
- Project Metadata
 - title: mmddy
- Physical folder is created in FTP Watch Folder (unless it exists)
 - folder name pattern: mmddy_IDEC (e.g. 061016_16000967)
- MAM will automatically ingest all files created in project folder and add them to project
 - Files ingested by MAM would stay in watch folder and not be ingested only once
 - Ingest will work for folder not older than 7 days (configurable)
- Email notification is sent after file is ingested (after processing is done)
 - notification sent to Multimedia@rferl.org
 - Email title: *New files added to mmddy Roundup*
 - Email body:
 - New files were added to [mmddy Roundup project](#):
 - [File 1](#)
 - [File 2](#)

- **Creating IN and OUT within a project**

From this release when producer creates a new asset from file within a project via Markers (INs and OUTs), the new Asset will be saved in the same project

- **Export Project**

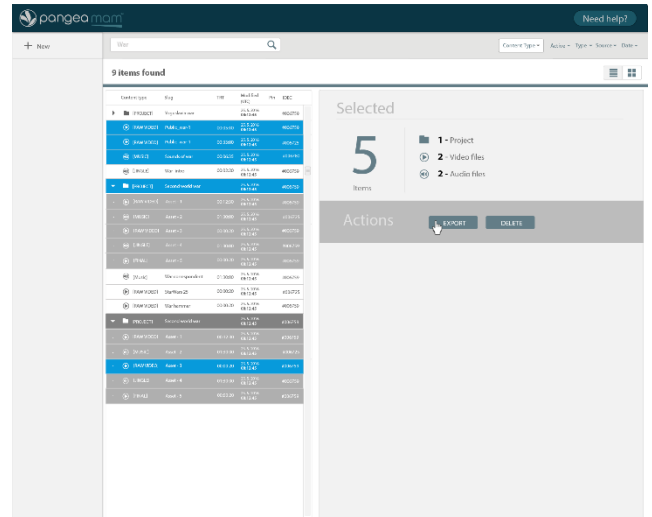
User has the ability to export projects created in MAM to a local destination (local folder where the export will take effect is configurable)

- When user hits the export button, Pangea MAM system will start a job that would collect all the files within the project and copy them from the Pangea MAM storage to a local storage
- When Export is finalize, user will get an email notification with the status of the export, (success or unsuccessful)
 - The notification display name of the project + IDEC, and path location of the exported project
 - The notification also will come with an attachment (XML File) that can be imported into Adobe Premiere.

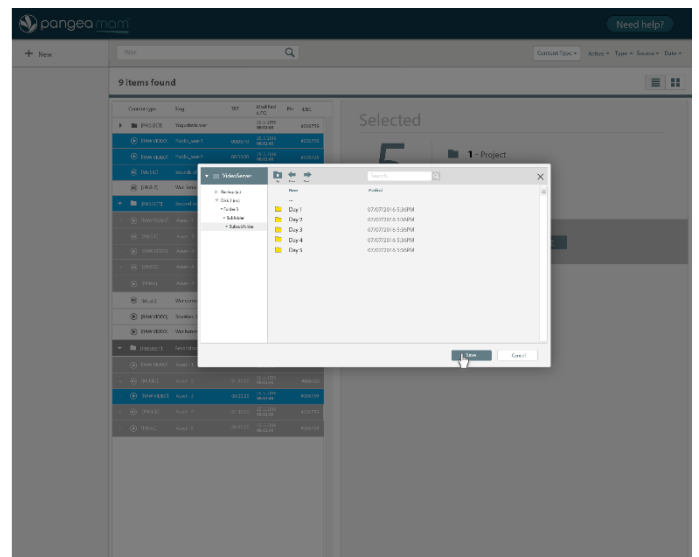
- On search landing page user will be able to
 - Select multiple assets on search results
 - videos, audios, project
 - selecting will be done by **CTRL** for single selection and **CTRL+Shift** for Range Selection

• **Selection**

- Each row is selected independently
 - When selecting project, items under it are not selected
 - When item under project is selected, project remains selected (if it was selected)
- If action is done on multiple items, action is done for each selected item
 - Exporting project exports all items under it
- When single asset or project is selected
- - New export button will appear and offer the user possibility to export asset/project
- When multiple assets/projects are selected
 - New right panel will appear and offer users possibility to
 - Delete
 - Export



- User will have option to select location and export the files
- In future it should be possible to have more than one
- Shows only folders, no files Navigation Up is possible Files will be copied from MAM to final location
- If same files are there already, they should not be overwritten
- A prompt message will let the user know that the export process has started
- Email notifications



- Once files are copied, User will get email notification letting him know files have been exported

New Keys

New keys will be ready for translation in Pangea CMS as of Jul 22, to localize the keys navigate to **Settings | Site Localization**. See below the complete list of new localization keys:

Note that keys `Responsive.Jobs.*` are relevant just for RFE/English Site

Responsive.Sharing.Print.Text
Responsive.Sharing.Print.Hover.Text
Responsive.Jobs.Page.Title
Responsive.Jobs.NewBadge.Text
Responsive.Jobs.Internship.Title
Responsive.Jobs.Internship.Info.Text
Responsive.Jobs.Internship.Prague.Text
Responsive.Jobs.Internship.Prague.Info
Responsive.Jobs.Internship.Prague.Email
Responsive.Jobs.Internship.Washington.Text
Responsive.Jobs.Internship.Washington.Info
Responsive.Jobs.Internship.Washington.Email
Responsive.Jobs.Info.WhoWeAre.Header
Responsive.Jobs.Info.WhoWeAre.Text
Responsive.Jobs.Info.Standards.Header
Responsive.Jobs.Info.Standards.Text
Responsive.Jobs.VacancyNumber.Intro
Responsive.Jobs.VacancyApplyNow.Label
Responsive.Jobs.VacancyApplyNow.Text
Responsive.Jobs.Qualifications.Label
Responsive.Jobs.Requirements.Label
Responsive.Jobs.BottomVacancyContent
Responsive.Jobs.Appointment.Text
Responsive.Jobs.Appointment.InfoPageUrl
Responsive.Jobs.RferlJobsLbl
Responsive.Media.RelatedLink.Head.Text
Responsive.Mailer.Subscription.ResultsLbl
Responsive.Mailer.Subscription.NoMailAvailable